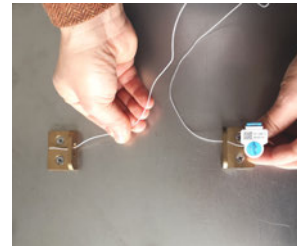


# How to apply

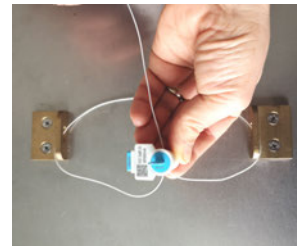
## Tacho Seal BP 140-PK and BP 140-XL PK

Carefully apply the Tachometer Seal to ensure its´ correct function. Once applied, make sure the label is clearly visible. The seal should be fixed as close as possible to the sealing point of the sensor.

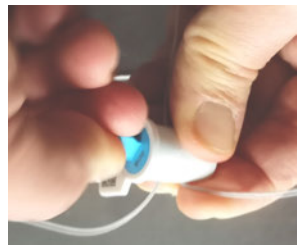
- 
1. Thread the wire through the sealing point on the sensor and around the appropriate location on the vehicle gearbox.



- 
2. Insert the end of the wire into the hole of the seal and pull the wire through, forming a loop.



- 
3. Turn the twist wing of the seal at least **four turns clockwise** until the wire is **tight**.



- 
4. Press the lateral slider, which makes further turns of the twister wing impossible and locks the seal.



- 
5. Break off the twist wing of the seal.





---

Bednorz GmbH & Co. KG  
Am Aspenhaag 5  
D - 65451 Kelsterbach

[www.bednorz.com](http://www.bednorz.com)

Fon: +49 (0) 6107 - 60 33  
Fax: +49 (0) 6107 - 62 49 7  
Mail: [info@bednorz.com](mailto:info@bednorz.com)